

Electrical wall lift for touch screen



052.7400-86 Swing - Wall lift for touch screen incl. turn function 180° max. 100 kg max. 86 inch

The Swing has an electric height adjustment of 500 mm for (touch) displays up to 86 inch.

In addition to the height adjustment; the monitor can be moved forward manually with a 180° turning motion and back to the wall again and be rotated in the forward position, 90° to the left and to the right.

The Swing therefore offers the most flexibility for an optimal positioning of your (touch) displays.

In brief:

- Adaptive use
- H&S responsible use
- Easy to install
- Universal for all (touch) displays

Electrical wall lift for touch screen

Features

Weight: 52.60 kg

Colour: White

Maximum load: 100 kg

Screen position: Landscape, Portrait

Inch range: max. 86 inch

Mobile / fixed: Fixed

Height adjustment: Electrical 500 mm, speed up to 20 mm/s

Bracket/interface: Included

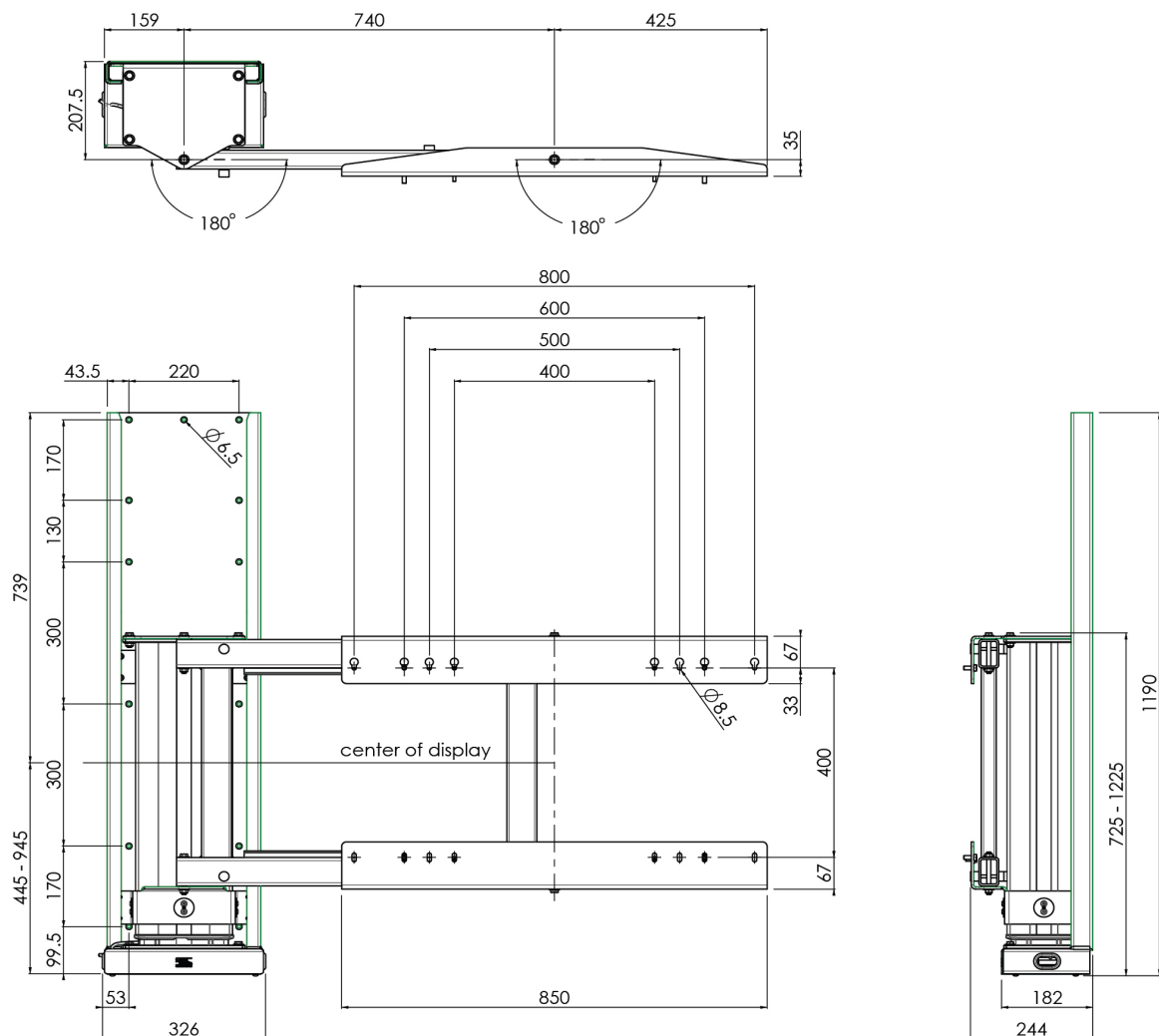
Type bracket/interface: VESA

Range bracket/interface: VESA 400, 600-400, 800-400

Other information: If one requires to place the monitor perpendicular to the wall, one can use a monitor of maximum 1874mm wide.

(flat screen max. 1991x1223mm)

► Is your flatscreen smaller? We also have a [model suitable up to 65 inch.](#)



Smart metals Manufactured
MOUNTING SOLUTIONS by SmartMetals