

## Electrical wall lift for touch screen



### 052.7400-65 Swing - Wall lift for touch screen incl. turn function 180° max. 100 kg max. 65 inch

The Swing has an electric height adjustment of 500 mm for (touch) displays up to 84 inch.

In addition to the height adjustment; the monitor can be moved forward manually with a 180° turning motion and back to the wall again and be rotated in the forward position, 90° to the left and to the right.

The Swing therefore offers the most flexibility for an optimal positioning of your (touch) displays.

In brief:

- Adaptive use
- H&S responsible use
- Easy to install
- Universal for all (touch) displays

## Electrical wall lift for touch screen

### Features

**Weight:** 50.20 kg

**Colour:** White

**Maximum load:** 100 kg

**Screen position:** Landscape, Portrait

**Inch range:** max. 65 inch

**Mobile / fixed:** Fixed

**Height adjustment:** Electrical 500 mm, speed up to 20 mm/s

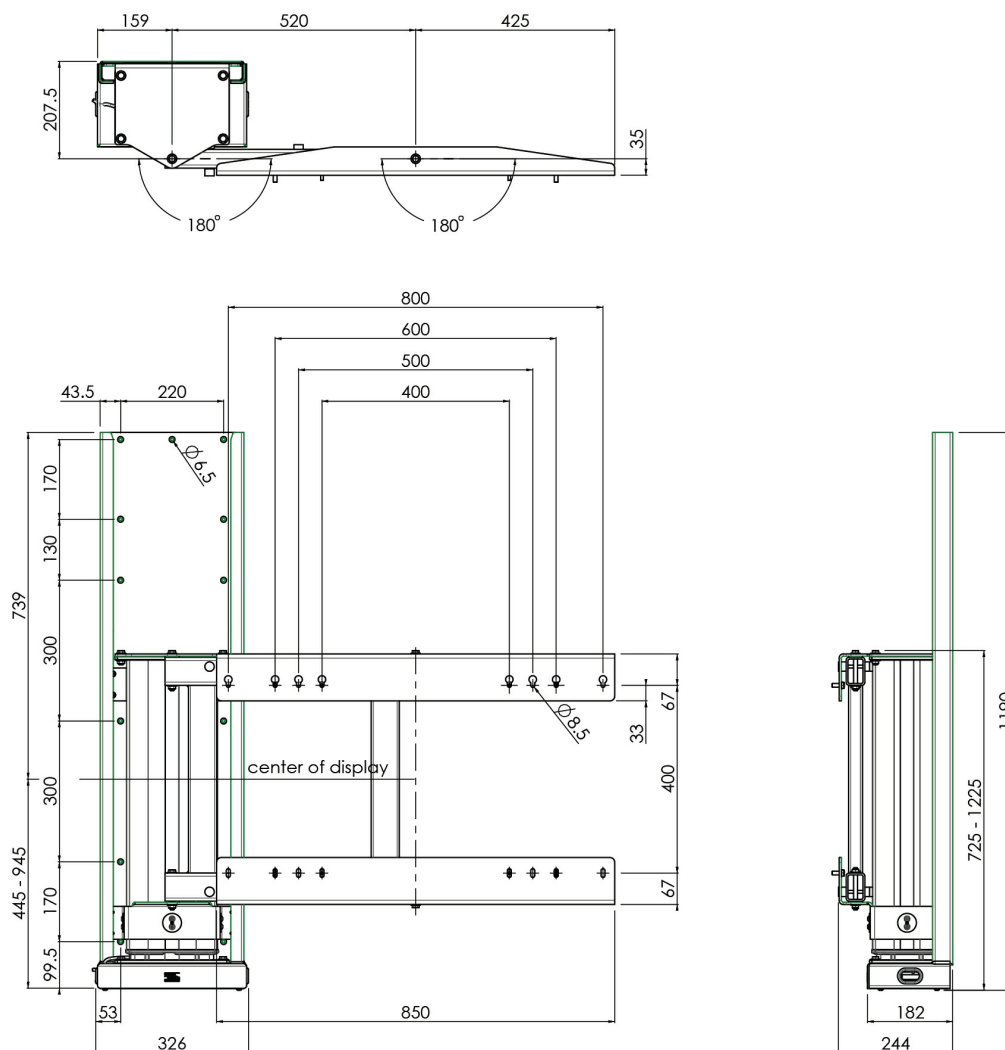
**Bracket/interface:** Included

**Type bracket/interface:** VESA

**Range bracket/interface:** VESA 400, 600-400, 800-400

**Other information:** (flat screen max. +/- 1544x925mm)

► Is your flatscreen bigger? We also have a [model suitable up to 86 inch.](#)



 Manufactured  
by SmartMetals